



Please do not print me!

Remember to print from page 2 to avoid wasting paper and ink.
If you do find me, then visit [twinkl.co.uk](https://www.twinkl.co.uk) to find out why **millions of educators** worldwide love twinkl.

A brief word about copyright...

By downloading this resource, you agree to the following:



You may use this resource for personal and/or classroom use only.

In order to support us, we ask that you always acknowledge www.twinkl.co.uk as the source of the resource. **If you love these resources, why not let others know about Twinkl?**



You must not reproduce or share this resource with others in any form. They are more than welcome to download the resource directly from us.

You must not host or in any other way share our resources directly with others, without our prior written permission.

We also ask that this product is not used for commercial purposes and also that you do not alter the digital versions of our products in any way.

Thank you for downloading!

Twinkl Educational Publishing. Your first choice for easy to use, trusted and high quality teaching materials for educators and parents worldwide
- professionally crafted materials with a personal touch.

[twinkl.co.uk](https://www.twinkl.co.uk)

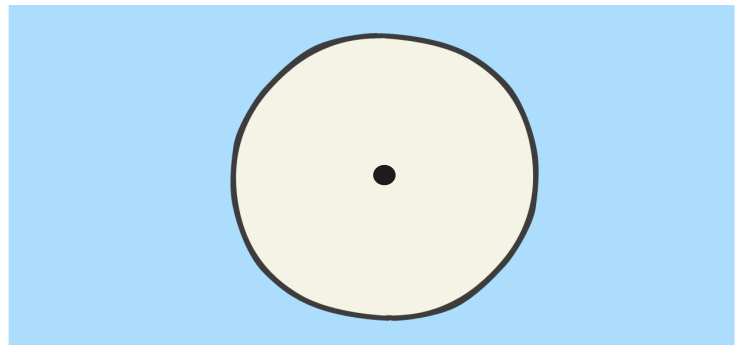
Little Red Riding Hood Wheel



Little Red Riding Hood Wheel Instructions

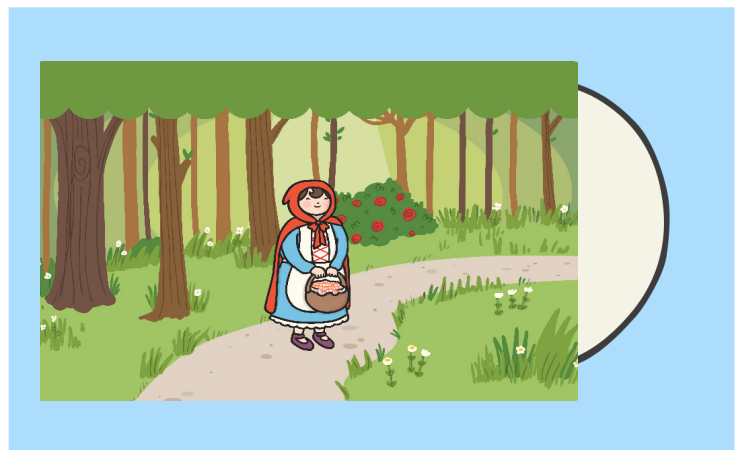
Step 1

Start with a card disc which has a hole in the centre.



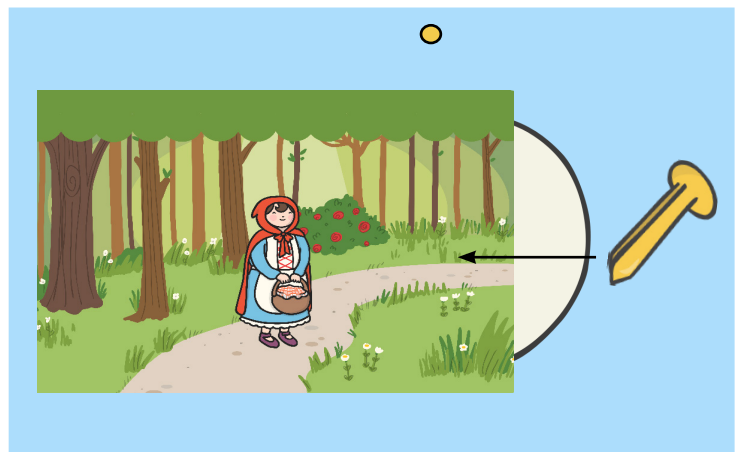
Step 2

Place the disc behind your background with the edge sticking out.



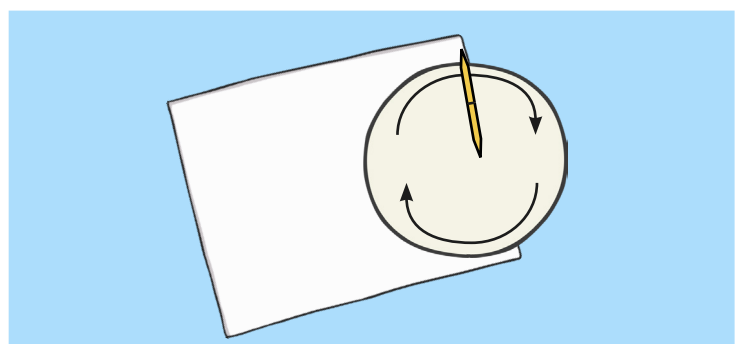
Step 3

Push a split pin through the background and into the hole on the wheel.



Step 4

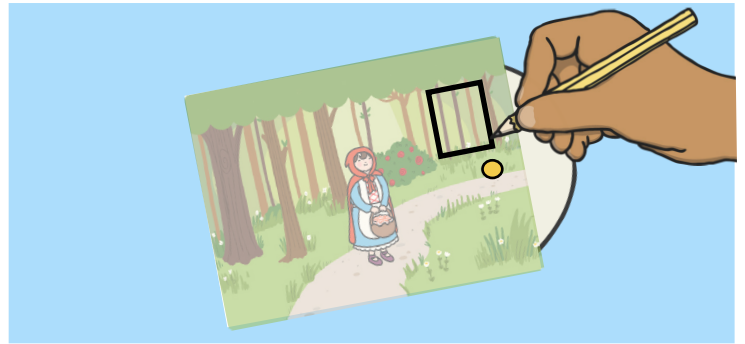
Turn the paper over and fold back the split pin. Now spin the card disc.



Little Red Riding Hood Wheel Instructions

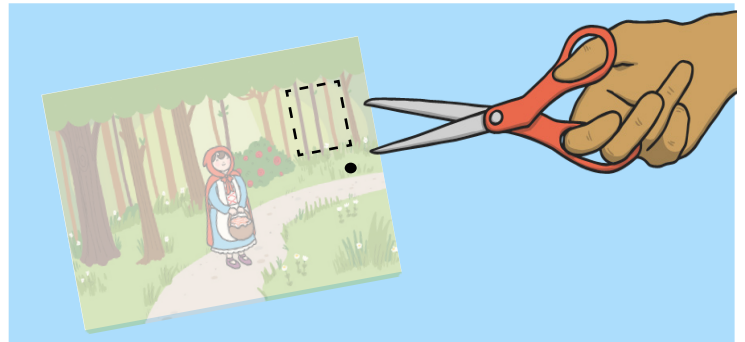
Step 5

Turn the paper over and, using a pencil, draw a neat square quite near to the edge.



Step 6

Open the paper fastener so that you can take the paper off the card disc. Cut out the square and then reassemble the wheel mechanism.

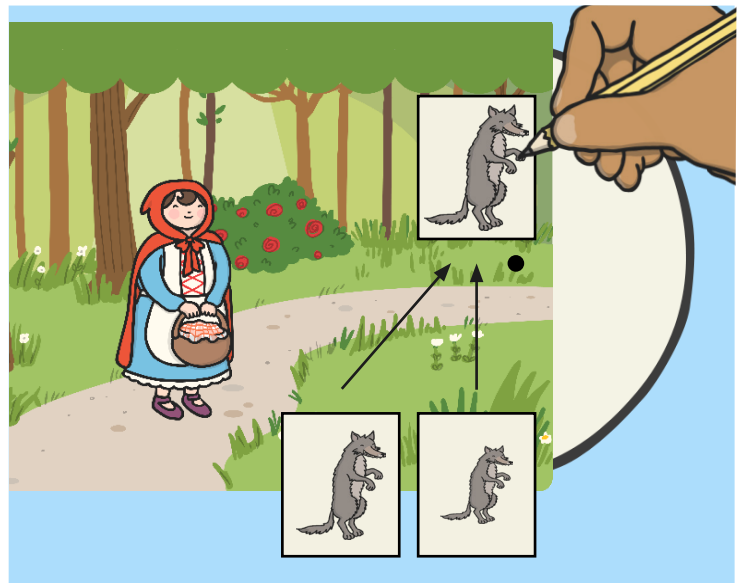


Step 7

Draw three pictures of the wolf on the card disc. Each picture needs to get slightly bigger each time.

The pictures need to be small enough to fit into the square cut from the background.

It is easier to draw these with the card disc fixed in place so you can check if the picture looks correct from the front.



Step 8

Turn the disc to check it moves easily and the pictures look correct.

